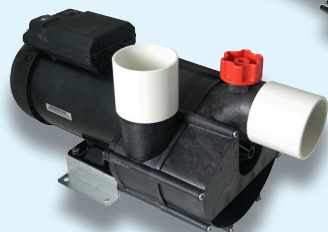




MAGIC SERIES, SUPER 90 SERIES, 43 SERIES, 21/80 SERIES, 80 SERIES.



speck
pumps 



Installation & Operating Manual



Pool Products for Pure Enjoyment

Table of contents

Installation & Operation Instructions.....	1
Features	1
Technical Specifications	1
Safety	2
General.....	2
Installation	3
Operation.....	4
Service and Maintenance	5
Troubleshooting Guide	7

INSTALLATION & OPERATION INSTRUCTIONS

Congratulations on choosing a Speck Pump. All Speck Pumps are precision manufactured and are of a robust construction that requires minimal service and maintenance.

With proper care and maintenance you will enjoy a long and carefree life from your pump.

FEATURES

- Reinforced moulded high head impeller for superior performance.
- One piece moulded body for extra strength and longevity.
- Rapid priming diffuser to quickly correct loss of flow.
- Simple assembly for ease of service.
- Large capacity basket with easy on/off lid.

TECHNICAL SPECIFICATIONS

Model	Motor model	Rated power	Max/min head [m]
Magic8	Fasco motor 806452NTG-A13AC	700	14/4
Magic 11	Fasco motor 806452PTG-A13AC	1000	13/4
90/230	Fasco motor 806452PTG-A13AC	1000	12/4
90/350	Fasco motor 806452QTG-A30AC	1100	13/4
90/400	Fasco motor 807252RTB-A11AC	1300	15/4
90/500	Fasco motor 807252STB-A18AC	1500	18/4
43/480 HLS	Fasco motor 807252XTB-A14AC	2100	23/6
43/480 HNS	Fasco motor 807252XTB-A14AC	2100	23/6
43/480 LS	Fasco motor 807252XTB-A14AC	2100	23/6
43/480 NS	Fasco motor 807252XTB-A14AC	2100	23/6
43/600 LS	Fasco motor 807252XTB-A14AC	2100	18/6
43/600 NS	Fasco motor 807252XTBSP-A14AC	2100	18/6
21/80 32SG	Fasco Motor 809252VTB-B14	2770	17/6
80/50 NS	Fasco Motor 809252VTB-B14	2770	17/6
80/50GS	Fasco Motor 809252VTB-B14	2770	17/6

SAFETY



DANGER
risk of electric shock

Warns that failure to observe the precautions involves a risk of electric shock.



This symbol together with one of the following words “Danger” or “Warning” indicates the risk level deriving from the failure to observe the prescribed safety precautions.



DANGER
Warns that failure to observe the precautions involves the risk of damage to persons and/or things.



WARNING
Warns that failure to observe the precautions involves the risk of damaging the pump and/or the plant.

GENERAL

The purpose of these instructions is to ensure the correct installation and best performance of your new pump.

Our pumps are specifically designed for use in the prefiltering and recirculation of swimming pools and spas, with clean water at a maximum operating temperature of 40 degrees Centigrade.

Failure of correctly install this equipment in line with these installation instruction will result in voidance of any warranty and will result in Continental Water Systems Pty Ltd. declining all responsibility.



- A qualified Technician should carry out the pump installation.
- Always wear protective clothing and gloves when handling adhesives.
- The pump must be installed and operated in accordance with the national wiring rules.
- Children should be supervised to ensure they do not play with the appliance.
- If the supply cord is damaged, it must be replaced by the manufacturer, its service agent or similarly qualified persons in order to avoid a hazard.
- This appliance is not intended to be used by persons (including children) with reduced physical, sensory or mental capabilities, or lack of experience and knowledge, unless they have been given supervision or instruction concerning use of the appliance by a person responsible for their safety.
- The pump should be supplied through a residual current device (RCD) having a rated residual operating current not exceeding 30mA.

INSTALLATION



- Locate the pump as close to the pool as practical and in accordance with any relevant regulations or recommendations.
- The pump must be installed in a dry and well-ventilated position protected from the elements.
- A clearance of 250mm is required behind the motor for ease of removal and ventilation.
- The pump must be installed horizontally up to 3 metres maximum below or 1.5 metres maximum above the pool water level.
- The piping should be as direct and free from turns or bends as possible as elbows and other fittings can greatly increase friction losses.
- DO NOT store or use gasoline or other flammable gases or liquids in the vicinity of this pump. DO NOT store pool chemicals near the pump.
- DO NOT remove any safety alert labels such as DANGER, WARNING or CAUTION. Keep safety labels in good condition and replace missing or damaged labels.
- Use PVC fittings for all connections. Suction (inlet) and discharge (outlet) unions are provided.
- When connecting pipework to pump with threaded ports, it is recommended that thread seal tape be used. If the suction pipe is not sealed correctly, the pump will not prime properly and will not pump efficiently.
- Suction and discharge lines should be independently supported as a point near the pump to avoid strains being placed on the pump.
- The suction and discharge pipes must not be smaller in diameter than the pump fittings.
- The power cable must be connected directly into the terminal box and be properly earthed.
- Flooding or moisture in the motor voids warranty. Ensure the pump is elevated and kept dry.



OPERATION

- To start up, unscrew the transparent pump lid and slowly fill the casing with water until the level comes up to the suction port. Ensure the strainer basket is in its guides and drops to the bottom of the casing and that the lid O-Ring is in place and the surfaces are free from dirt and grime. Firmly close the lid clockwise. If bubbles persist under the lid there is a leak in the suction connections or the lid is not sealed properly. Repeat this entire operation if necessary.
- Ensure all suction and discharge valves are open and then turn on the pump. The pump will take a short time to prime and then deliver at full rate. No further priming should be required.
- Running the pump without water or without the strainer basket in place voids warranty.
- Special care must be taken to ensure no small pebbles or debris (especially in new pools) is ingested into the pump as this voids warranty and a service charge will be levied for repair.

SERVICE AND MAINTENANCE

To achieve a maximum potential life expectancy from your pump we recommend the following steps be taken:

1. Empty the skimmer basket regularly

The regularity will vary from pool to pool, for example:

- Where you may have lots of leaves and debris you should empty the basket **twice or more for each operating cycle**, particularly when using a suction type cleaner.
- Where you may have minimal leaves and debris the basket may only require **checking weekly**.
- **Always remove children's toys or balls from the pool when not in use.**

2. Check for leakages

Carry out weekly inspections, for example:

- Around the pump, filter, chlorinator and heater (where fitted) where water can leak from all or some of these components.
- **If water is present whether you can see the source of the leak or not, then contact your serviceman immediately. This may reduce the possibility of major pump damage.**

3. Inspect and empty the pump lint basket at least weekly

- Turn pump OFF at the mains power supply**
- Close all valves**
Where fitted, to prevent water loss through pump.
- Remove clear plastic screw-on lid of the pump.**
- Remove yellow plastic basket and empty any contents.**
If a sock or filter has been fitted, inspect it for holes and replace if necessary.
- Inspect the chamber housing of the basket**
Ensure no debris, pebbles or leaves have fallen in whilst removing the basket, remove all foreign material.
- Return the yellow basket into the chamber.**
There are two sets of guides for the basket to sit in. Ensure the basket is correctly seated to avoid any damage to the pump.
- Lubricate (twice weekly) the "O" ring.**
The "O" ring can be located on top of the chamber where the lid screws on, use a silicone lubricant which is available from your pool shop or serviceman.

DO NOT USE PETROLEUM GEL OR AXLE GREASE, THIS WILL DAMAGE THE "O" RING.



h) Replace the screw-on lid

Firmly by hand only.

i) Re-open any valves

Where fitted, that were closed in step 2 above.

j) Operate your pump

It is essential that the pump be operated after carrying out the above procedure, this will purge any air from the system. Start the pump and wait until the lint pot/ chamber is full of water. Then where fitted, open air bleed fitting on the filter to expel air. Once the stream of water emerges all air is gone and you can close the air bleed valve.

DUAL SPEED PUMPS MUST BE STARTED ON HIGH TO PURGE AIR.

IT IS NOW SAFE TO SET THE PUMP TO AUTOMATIC OR NORMAL OPERATION POSITION.

4. Dirty Filters

Restricted water flow can cause the pump to overwork thus shortening it's lifespan. Please follow the filter manufacturer's guidelines for the method and frequency of cleaning.

5. Noisy Pump

As with all mechanical devices, if more noise than usual is heard coming from the pump, notify the supplier or Continental Water Systems or your pool service person. A noise can indicate a fault and the longer this is left unattended the risk of increased damage can occur resulting in an expensive repair or replacement.

6. Pebblecrete Pools

All pebblecrete or similar pools should initially be fitted with a sock in either the skimmer basket or in the pump lint basket to prevent damage to the pump as a result of loose stones making their way through the system. Should a sock not be installed, any subsequent damage caused by loose pebble entering the pump impeller will void the warranty.

TROUBLESHOOTING GUIDE

WARNING: Your pump must be serviced by a professional service technician qualified in pool/spa installation. The following procedures must be followed exactly. Improper installation and/or operation can create dangerous electrical hazards, which can cause high voltage to run through the electrical system. This can cause property damage, serious personal injury and/or death. Improper installation and/or operation will void the warranty.

Problem	Possible Cause	Solution
Pump will not prime	A. Suction Air Leak	Make sure see-through lid and o-rings are clean and properly positioned. Hand tighten see-through lid. Tighten all pipes and fittings on suction side of pump. Be sure water in pool is high enough to flow through skimmer box.
	B. No water in pump	Make sure strainer tank is full of water and free of air.
	C. Closed valves or blocked lines	Open all valves in system. Clean skimmer and strainer tank. Open pump and check for clogging of impeller.
	D. Low voltage to motor	Check voltage at motor. If low, pump will not come up to speed.
3. Motor does not turn	A. No power to motor	Check that all power switches are on. Be sure fuse or circuit breaker is properly set. Check timer settings. Check motor wiring at terminal.
	B. Pump jammed	With power off, turn shaft. It should spin freely. If not, disassemble and repair.
4. Low flow	A. Dirty Filter	Backwash filter or clean cartridges.
	B. Suction leak	See problem 2 above.

Terms of Warranty

Your Speck Pump pump is carries a manufacturer's warranty of 2 years on the motor (including control panel) and 5 years on the wet end components including casing, diffuser, gland housing, impeller and mechanical seal subject to the following terms and conditions:

1. Continental Water Systems Pty Ltd ("Continental") warrants to the Original Purchaser that all equipment manufactured by "Continental" is free from defect in workmanship and materials of construction at the time of dispatch from "Continental's" premises.
2. This warranty does not extend to any claim made more than twelve (12) months after the date of sale of the equipment to the Original Purchaser unless expressly stated in the Warranty Period overleaf. Proof of date of purchase must be supplied with all equipment returned for warranty repair.
3. Any claim made in relation to this warranty is solely limited to the cost of replacement or repair of the equipment or such parts claimed to be defective. "Continental" accepts no other liability for incidental or consequential damages.
4. The warranty on ancillary components not manufactured by "Continental" will be limited to the warranty extended to "Continental" by the manufacturer of the said ancillary components.
5. This warranty is only valid when the equipment has been used in a normal service for which it was intended and serviced by an authorised dealer of "Continental".
6. This warranty does not cover any equipment that has been improperly installed, misused, neglected, damaged, altered in any way from its original condition at date of sale or repaired without the authorisation of "Continental".
7. The replacement of consumable items, including lids and baskets, is not covered under this warranty.
8. This warranty does not cover equipment subjected to adverse conditions including, but not limited to, hot water exceeding normal spa temperatures, hot operating enclosures with poor ventilation, fluctuating power supplies, water pressures greater than 250kPa, motor submersion or lack of protection from the weather.
9. This warranty does not cover damage to pump internals caused by foreign debris entering via suction pool cleaners, refer to equipment installation instructions.
10. Any liability of "Continental" pursuant to the Trade Practices Act 1974, as amended for a breach of a condition or warranty, shall be limited to replacing or acquiring the same equipment (or any part thereof) or the services supplied.
11. The maximum liability incurred by "Continental" shall not exceed in any case the contract price for the equipment or the product parts claimed to be defective. Further, "Continental" shall not be liable for any loss, damage or delay directly or indirectly caused by any malfunction of or defect of or failure of the equipment other than as expressly stated in this warranty.
12. All on site Service Work is subject to a Service Call Charge which must be accepted by the Customer before any work will be carried out.
13. **Any equipment requiring warranty repair must be returned to "Continental" or the Dealer PREPAID** as soon as the Original Purchaser becomes aware of any fault. Neither "Continental" nor the Dealer shall be responsible for any goods damaged in transit. If the equipment is found to be defective after examination it will be repaired or replaced free of charge and returned **FREIGHT COLLECT**. If the equipment is not defective and outside of warranty all repair or replacement costs will be charged to the Original Purchaser or their representative and returned **FREIGHT COLLECT**.

PLEASE COMPLETE THE FOLLOWING, ATTACH YOUR RECEIPT AND KEEP THIS MANUAL IN A SAFE PLACE FOR FUTURE REFERENCE:

Product name and model: _____

Product Serial Number: _____

Date of Purchase: _____

Purchased from: _____

WARRANTY CARD

Name: _____

MODEL No. _____

Address: _____

Postcode: _____

Phone (H): _____

Phone (W): _____

Purchased from: _____

Address: _____

Postcode: _____

Date of Purchase: _____

☐ PLEASE ADD ME TO YOUR MAILING LIST.

CONTINENTAL
WATER



Continental Water Systems

P.O. Box 297

SEVEN HILLS 1730

Ph: (02) 9838 8111



STAMP
GOES HERE

Continental Water Systems Pty Ltd
PO Box 297
SEVEN HILLS NSW 1730
AUSTRALIA